



MEXICO CITY 2021
GLOBAL SOCIAL
ECONOMY FORUM

GSEF Global Virtual Forum



UNRISD

United Nations Research Institute for Social Development

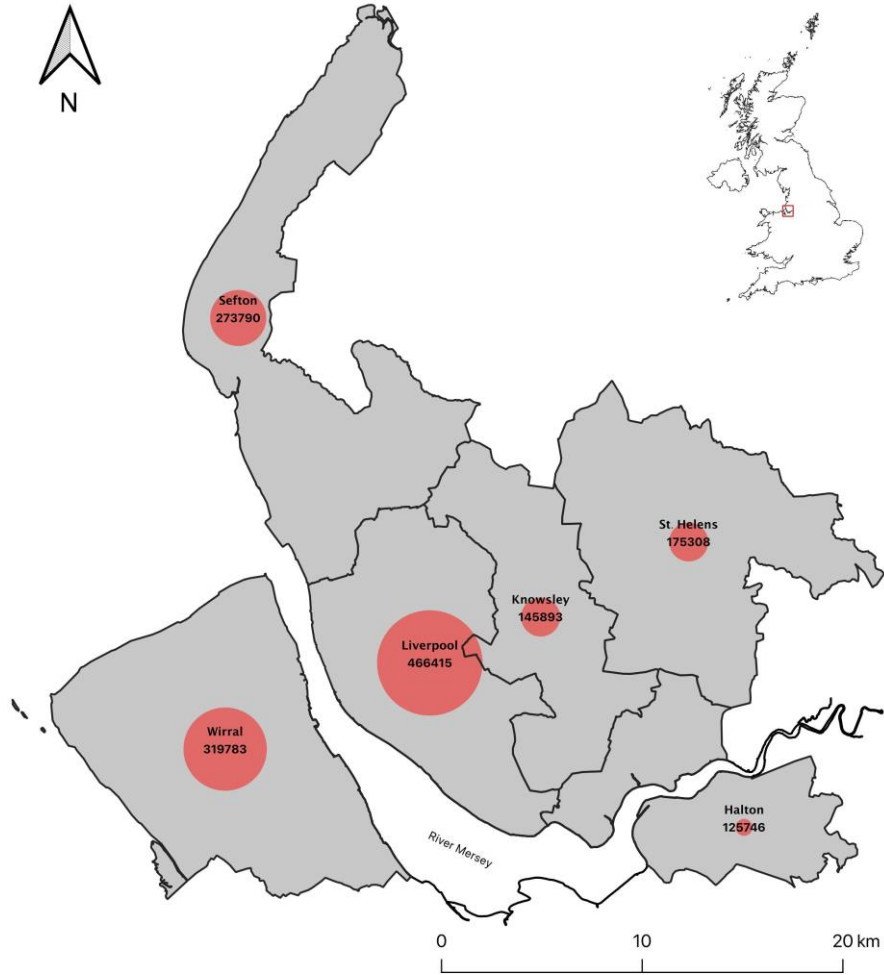
UNRISD project on 'Promoting SSE through Public Policies: Guidelines for Local Governments'

The Social and Solidarity Economy in the Liverpool City Region

Helen Heap, Alan Southern and Matt Thompson
October 19th 2020



UNIVERSITY OF
LIVERPOOL



Liverpool City Region (LCR)

- Halton, Knowsley, Liverpool, Sefton, St Helens, Wirral
- Pop. ~ 1.6m
- Strong maritime history
- Suffered economically since 1970s
- Currently at the centre of the Covid-19 public health crisis in the UK

The national framework

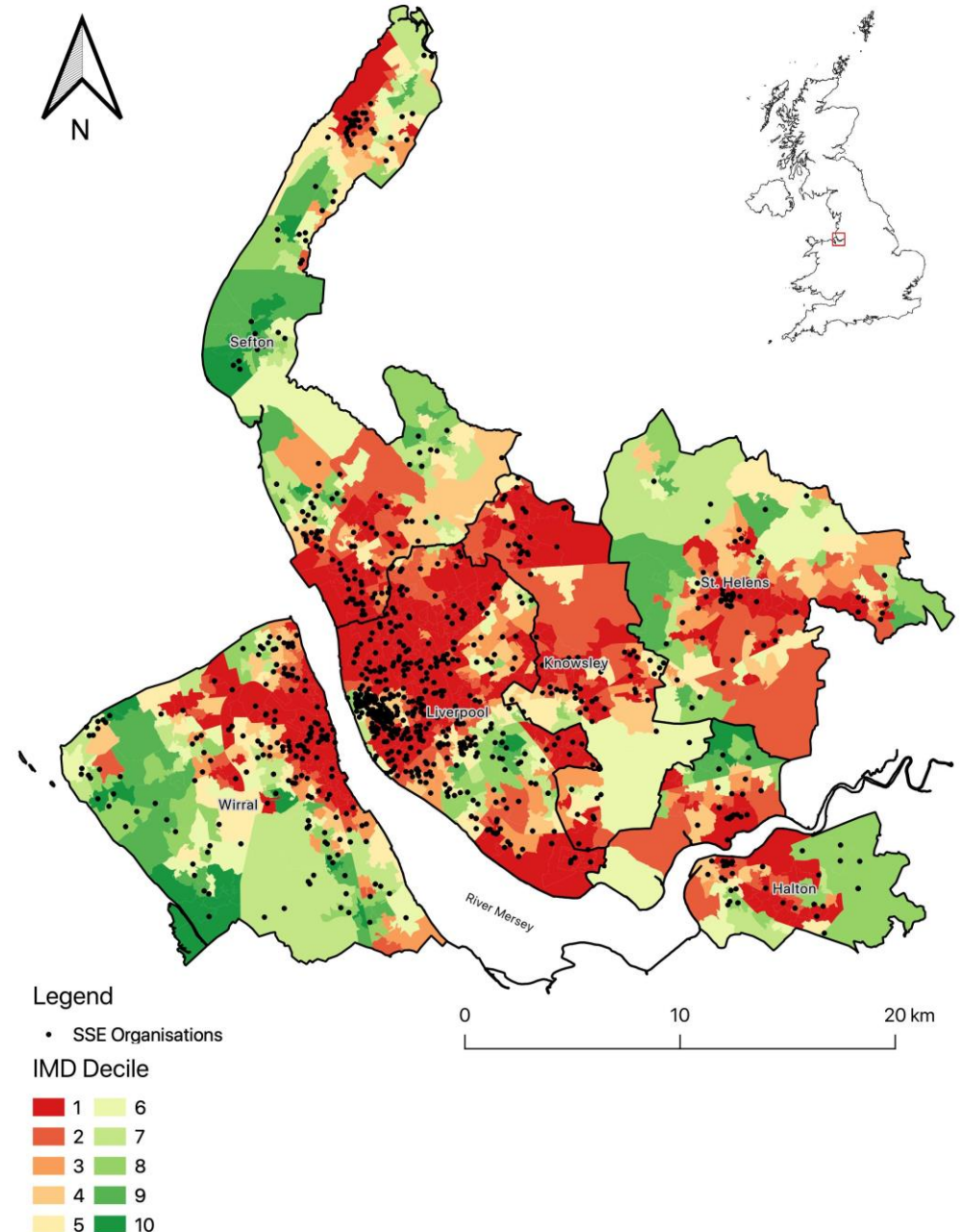
- No legal form for SSE or social enterprise
- General business legislation (company law) and ethos of deregulation producing a focus on market-ideals for social enterprise
- Community Interest Company (CIC), Co-operatives, Charities
- The Public Services (Social Value) Act 2012
- Devolution
 - Four nations
 - City Region governance

The SSE in Liverpool City Region

- The history of the SSE in LCR
 - Philanthropy, charitable trusts, co-operativism, mutualism, trade unionism
 - Latter part of 20C – community development, housing cooperatives
 - EU Objective I funding supports a developing social enterprise sector
 - Post 2010 – austerity driven response from the SSE, some return to radical politics with a distinct entrepreneurial flavour
- 2016
 - 1400 trading organisations in the LCR SSE
 - 45000 employees, £3bn revenue, £4bn asset base
 - Persistent poverty – response from the SSE

The SSE in Liverpool City Region

- We see the concentration of SSE organisations – those that trade – in areas that suffer the greatest scores in the governments indices of deprivation
- Why? Market failure, retreat of the state, privatisation, historic positioning of SSE
- How do we change this?



Developing the SSE in Liverpool City Region

To put it simply!

- Use national policy where we can
- Exploit the devolution of governance
- Ensure policy meets needs of SSE (and not needs of providers)
- Build on the history, content and dynamic of what we have
- Shape the local economy to make it more social

But how?

- This is about what the SSE can do for the city region

Developing the SSE in Liverpool City Region

Initiatives need to connect and be co-owned by SSE, public and private sectors

- National legislation can be used to shape markets
 - Can we increase aggregate demand by using anchor institutions via the Social Value Act and shape markets for local SSE and small business
 - Where and how can we expand on this? (Through employment rights, in the private sector and beyond the city region)
- Use devolved governance to establish a stronger SSE voice
 - The LCR SSE Reference Panel
 - Local industrial strategy with the SSE taking prominent position

Developing the SSE in Liverpool City Region

- Organise the SSE
 - Stronger support agencies
 - Greater levels of democracy and accountability within the sector
 - Greater levels of diversity (BAME communities, young people...)
- Shape supply into the SSE
 - Better forms of finance – social investment
 - Greater chances to work and set up in the sector (education, training...)
- Co-production
 - Knowledge
 - Policy
 - Raise awareness of the SSE

Dealing with the crisis

- The role of the SSE in the city region
- An early reaction to the crisis in March 2020
- SSE mobilised to support communities (poverty and place link)
- Financial difficulties
 - Community funds were initiated and support for social enterprise provided
- Current phase of crisis
 - Demonstrates weakness of devolution arrangements
 - Threatens achievements of SSE in recent years
- ‘Build Back Better’ will need resources, planning and co-production